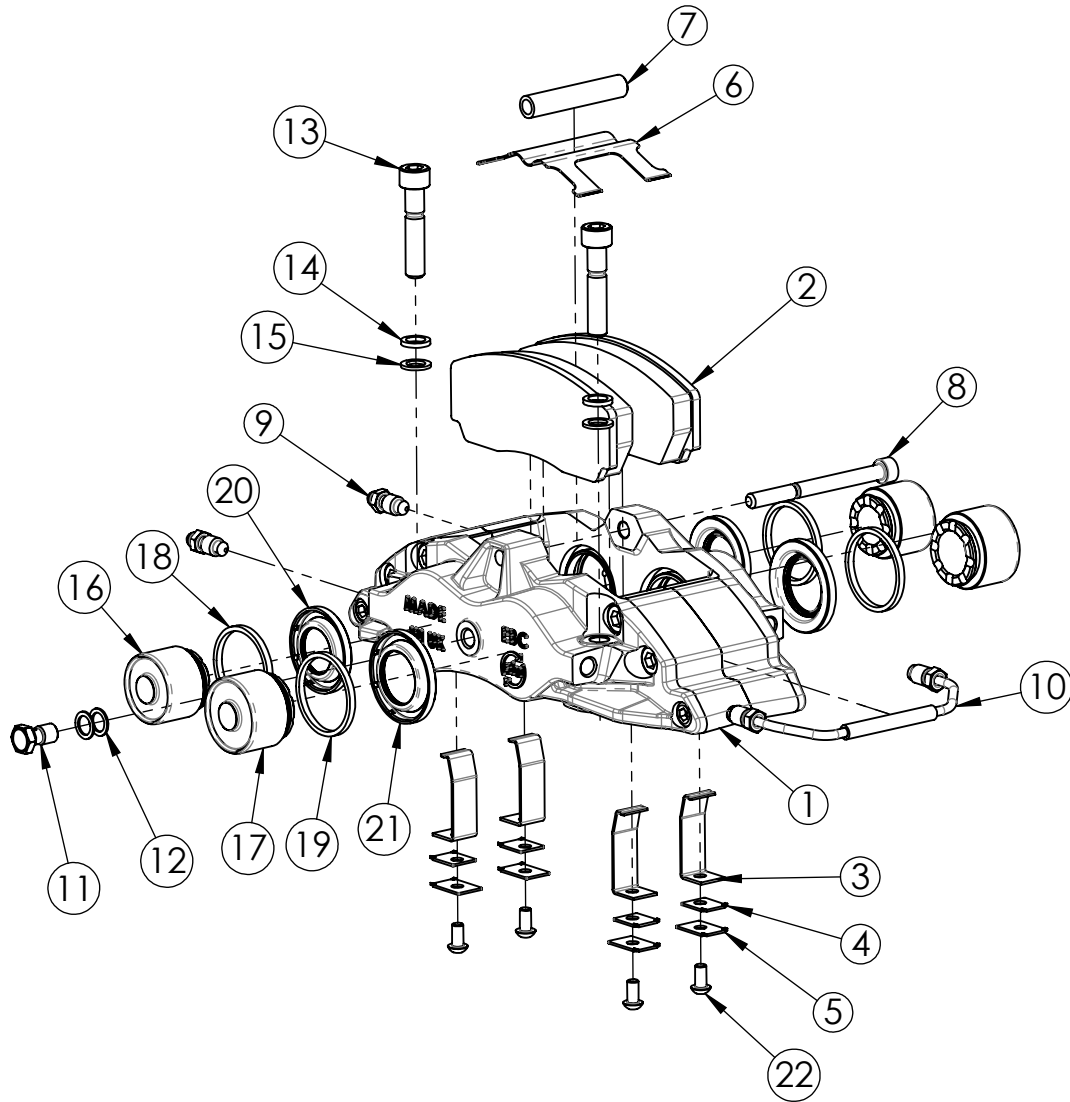


ALL DIMENSIONS IN MILLIMETRES



ITEM NO.	DESCRIPTION	QTY.	4101/2 PART NO.	4103/4 PART NO.
1	CALIPER BODY		BCC-4101/2	BCC-4103/4
2	BRAKE PAD SET	1	DP002 (49mm PAD DEPTH) DP031 (45mm PAD DEPTH)	DP002 (49mm PAD DEPTH) DP031 (45mm PAD DEPTH)
3	WEAR PLATE C-CLIP4100 SERIES CALIPER	4	BCC-4100CLIP1	BCC-4100CLIP1
4	ABUTMENT SPACER PLATE 4100 SERIES CALIPER	8	BCC-4100CLIP3	BCC-4100CLIP3
5	ABUTMENT PLATE 4100 SERIES CALIPER	4	BCC-4100CLIP2	BCC-4100CLIP2
6	PAD RETENTION SPRING	1	BCKS-4100PADSPRING28	BCKS-4100PADSPRING32
7	PAD RETENTION BOLT COLLAR 4100 SERIES CALIPER	1	BCC-4100COLLAR28	BCC-4100COLLAR32
8	STAINLESS STEEL BOLT M8x1.25 x100mm	1	BCC-BOLTM8X100SS	BCC-BOLTM8X100SS
9	BLEED NIPPLE M10X1.0	2	BCC-BNM10X1	BCC-BNM10X1
10	FLUID CROSSOVER PIPE	1	BCC-4100-28XO/PIPE	BCC-4100-32XO/PIPE
11	BANJO BOLT M10x1.0	1	N/A	N/A
12	COPPER WASHER M10	2	N/A	N/A
13	CALIPER MOUNTING BOLT M10x1.25 x55mm	2	BCC-BOLTM10X55HT/ZP	BCC-BOLTM10X55HT/ZP
14	LOCKING SPRING WASHER M10	2	BCC-M10LOCKWASHER	BCC-M10LOCKWASHER
15	FLAT WASHER M10	2	BCC-M10WASHER-16OD	BCC-M10WASHER-16OD
16	Ø38.1mm PISTON (FOR DUST BOOT)	2	BCC-PIST38DB	BCC-PIST38DB
17	Ø41.2mm PISTON (FOR DUST BOOT)	2	BCC-PIST41DB	BCC-PIST41DB
18	HYDRAULIC SEAL FOR 38.1mm PISTON	2	BCC-SEAL38	BCC-SEAL38
19	HYDRAULIC SEAL FOR 41.2mm PISTON	2	BCC-SEAL41	BCC-SEAL41
20	DUST BOOT SEAL FOR 38.1mm PISTON	2	BCC-DB38	BCC-DB38
21	DUST BOOT SEAL FOR 41.2mm PISTON	2	BCC-DB41	BCC-DB41
22	STAINLESS STEEL BOLT M6x0.7 x12mm	4	BCC-BOLTM6X12SS	BCC-BOLTM6X12SS



Freeman Automotive (UK) LTD
EBC BRAKES WORLD HEADQUARTERS
 Upton Valley Way East,
 Pineham. Northampton NN4 9EF

TITLE:

Apollo-4 (100 SERIES)
 CALIPER
 EXPLODED VIEW

THIS DRAWING IS PROTECTED BY COPYRIGHT AND IS PROVIDED FOR REFERENCE PURPOSES ONLY. IT MUST NOT BE COPIED, PRINTED OR USED FOR ANY PURPOSES OTHER THAN THAT AGREED WITH FREEMAN AUTOMOTIVE UK LTD.